

MARFIL  
TILES 

**STEP** Collection



FULL BODY VITRIFIED TILES

# STAY TRENDY

with  
the new collection of full body vitrified  
steps and risers

---

# STEPS THAT SOUND SAFETY

## Introducing

---

Stairs and staircases are defined by more than just their usefulness. These functional devices are also appealing from a style standpoint, since well-appointed staircases are now a distinguishing element in homes, rooms, or halls. Marfil full body Steps and risers are available in a variety of colours and shades to complement your interior and external areas.

## Size

**300X  
1200mm**

[www.marfiltiles.net](http://www.marfiltiles.net)

# A P R I C O T



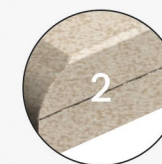
Size  
**300x1200mm**

Surface  
**Matt**

Thickness  
**09mm**



**BULL NOSE  
MOULDING**



**SANDWICH**



**GROOVE WITH  
EPOXY FILLING**

**STEP** Collection

A stair riser is the near-vertical element in a set of stairs, forming the space between one step and the next. It is sometimes slightly inclined from the vertical so that its top is closer than its base to the person climbing the stairs.

# A P R I C O T

www.marfiltiles.net



APRICOT

300x1200mm

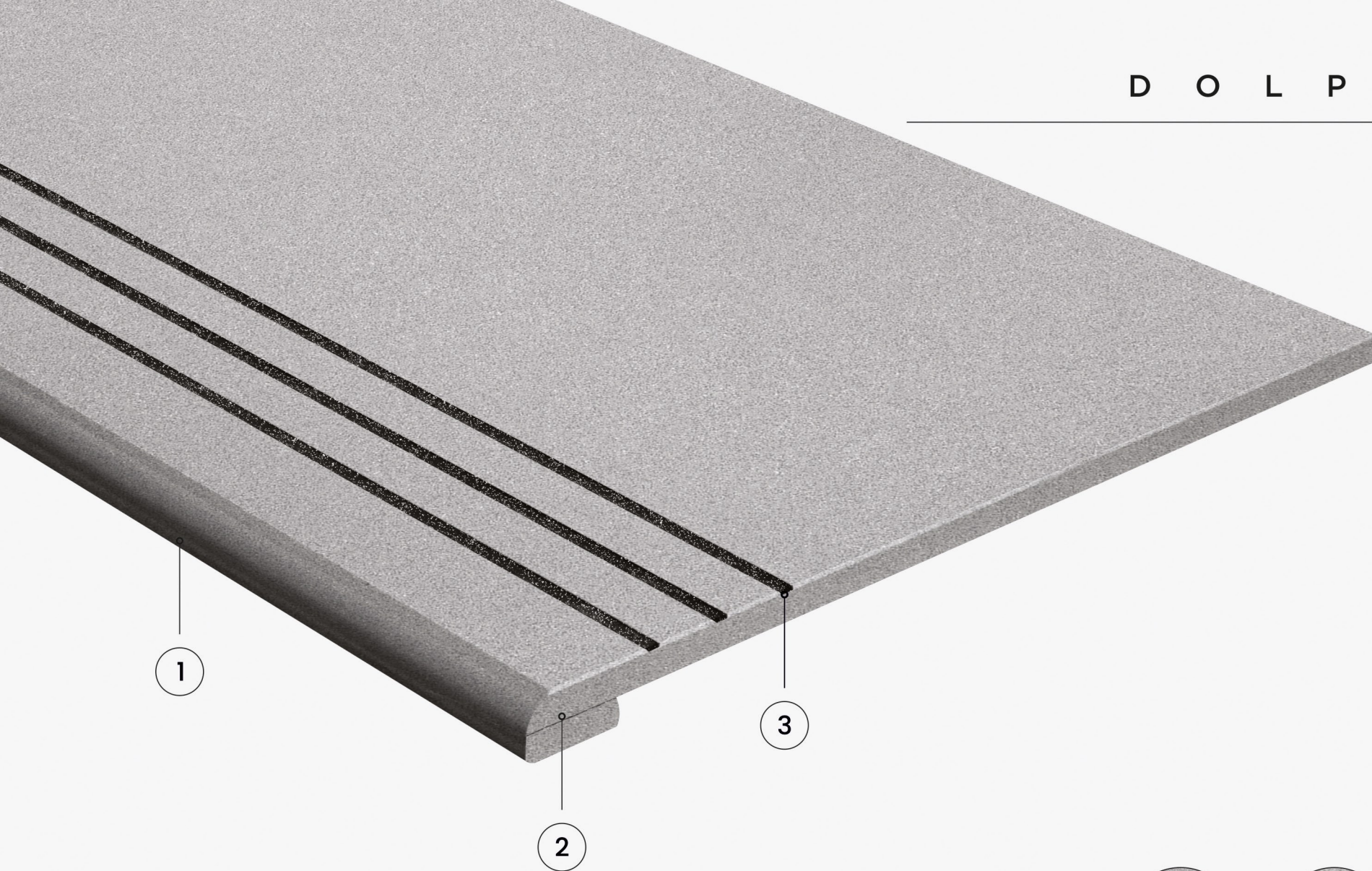


MARFIL  
TILES



A P R I C O T

# D O L P H I N



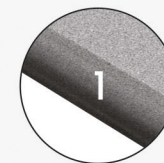
Size  
**300x1200mm**

Surface  
**Matt**

Thickness  
**09mm**

**STEP** Collection

A stair riser is the near-vertical element in a set of stairs, forming the space between one step and the next. It is sometimes slightly inclined from the vertical so that its top is closer than its base to the person climbing the stairs.



**BULL NOSE  
MOULDING**



**SANDWICH**



**GROOVE WITH  
EPOXY FILLING**

# D O L P H I N



DOLPHIN

300x1200mm



MARFIL  
TILES

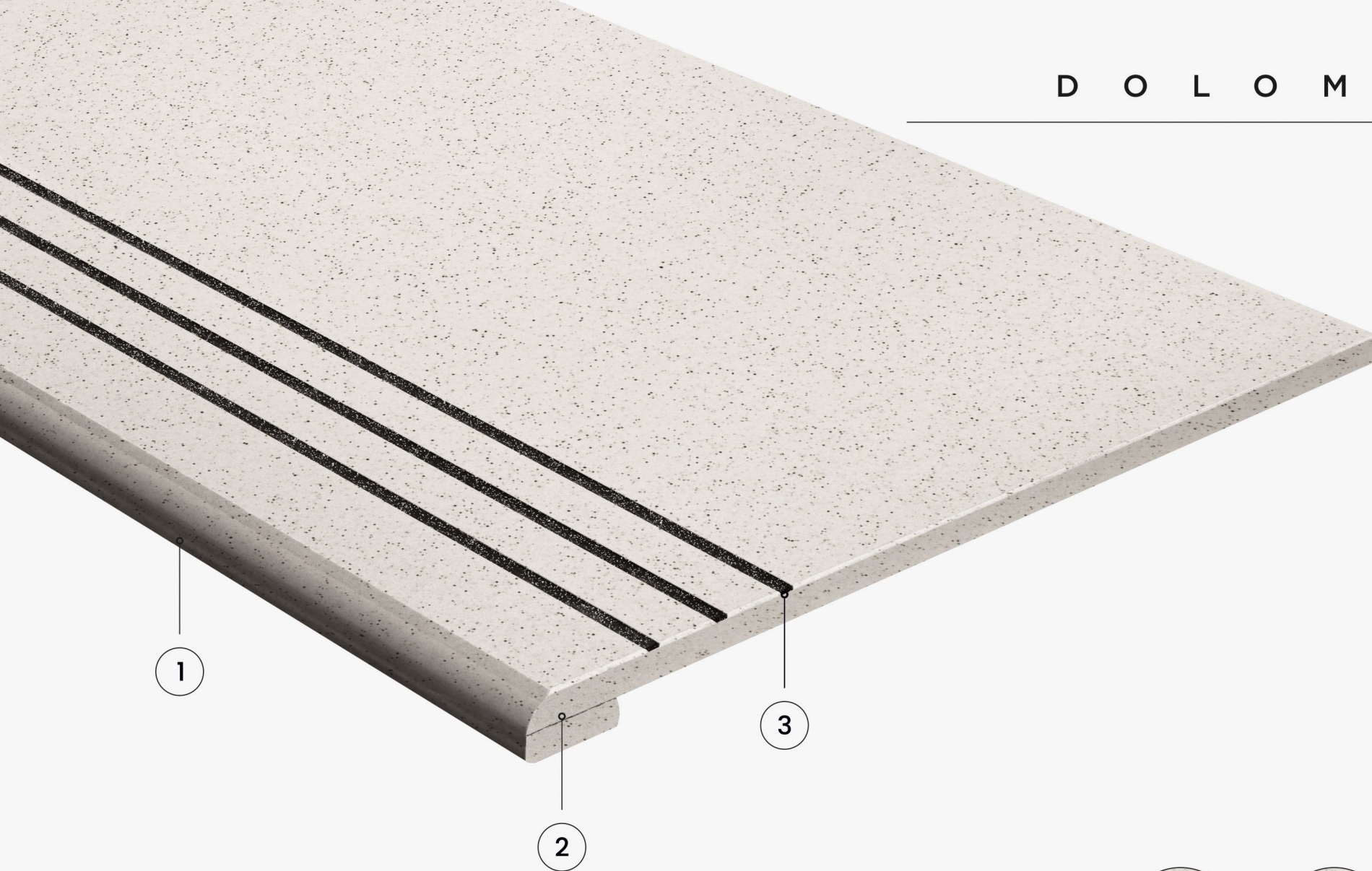


D O L P H I N





# D O L O M I N E



Size  
**300x1200mm**

Surface  
**Matt**

Thickness  
**09mm**

**STEP** Collection

A stair riser is the near-vertical element in a set of stairs, forming the space between one step and the next. It is sometimes slightly inclined from the vertical so that its top is closer than its base to the person climbing the stairs.



**BULL NOSE  
MOULDING**



**SANDWICH**



**GROOVE WITH  
EPOXY FILLING**

# D O L O M I N E



DOLOMINE

300x1200mm



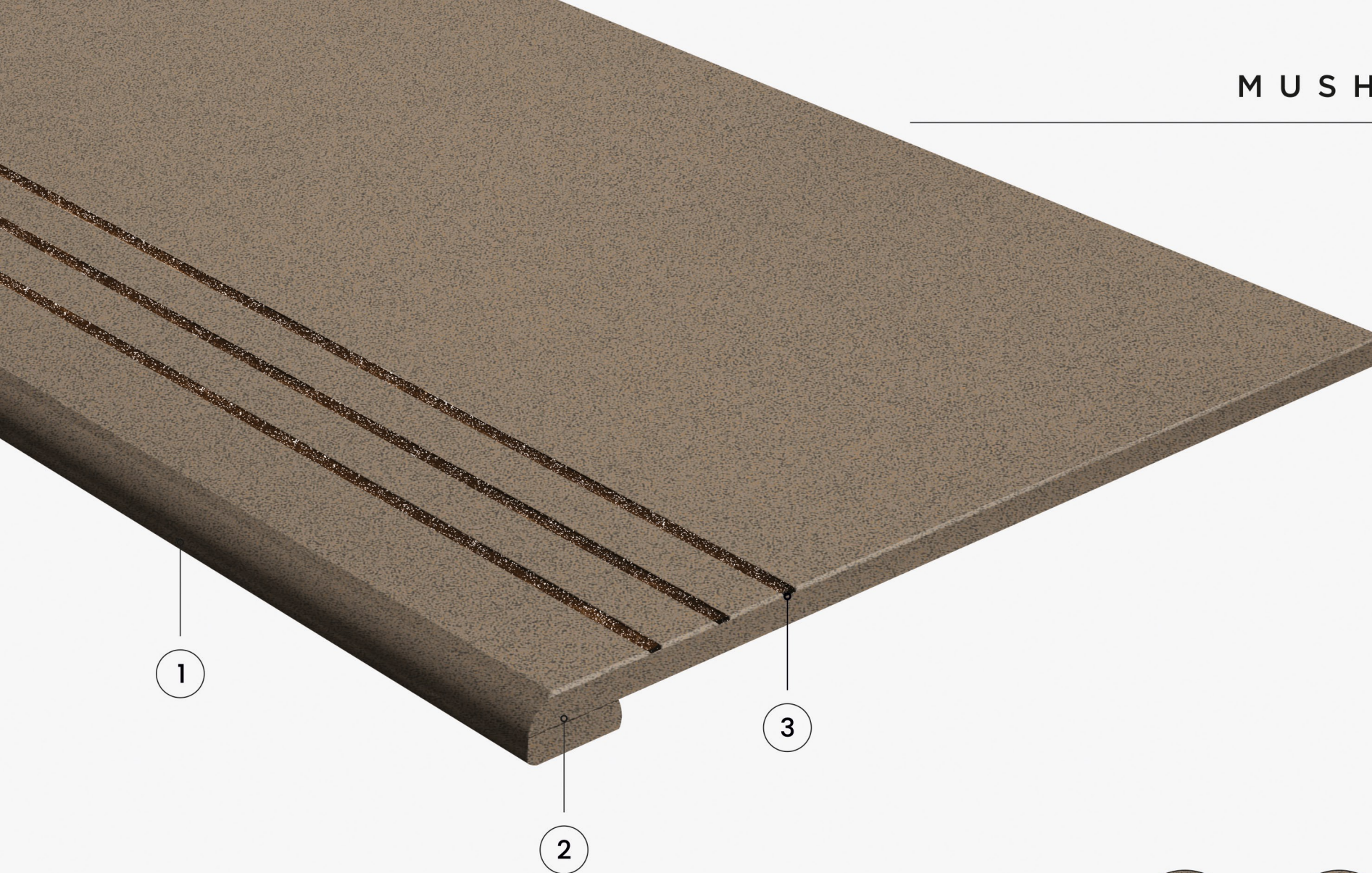
MARFIL  
TILES



D O L O M I N E



# M U S H R O O M



Size  
**300x1200mm**

Surface  
**Matt**

Thickness  
**09mm**



**BULL NOSE  
MOULDING**



**SANDWICH**



**GROOVE WITH  
EPOXY FILLING**

**STEP** Collection

A stair riser is the near-vertical element in a set of stairs, forming the space between one step and the next. It is sometimes slightly inclined from the vertical so that its top is closer than its base to the person climbing the stairs.

# M U S H R O O M

www.  
marfiltiles.net



MUSHROOM

300x1200mm

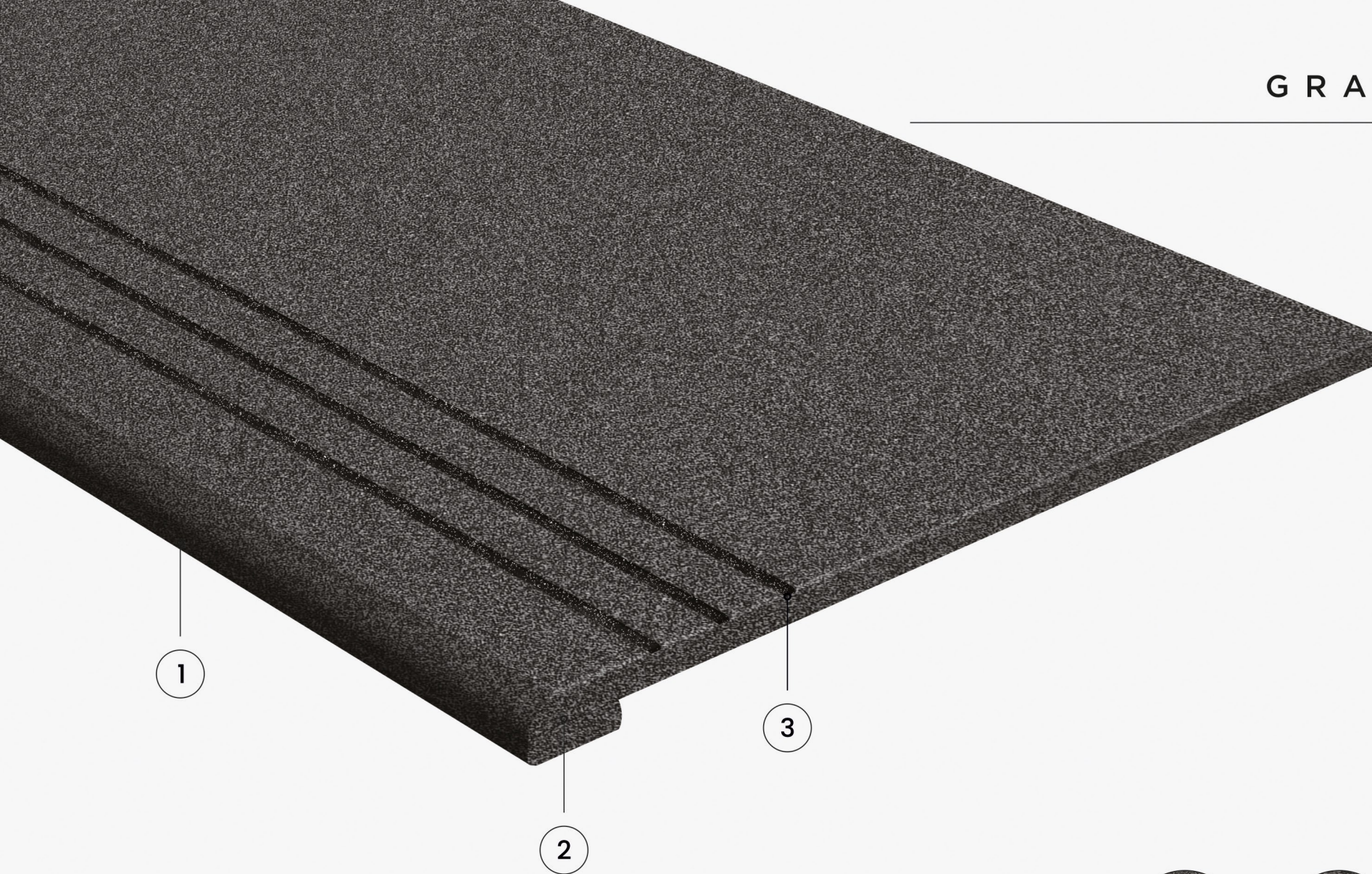


MARFIL  
TILES



M U S H R O O M

# GRAPHITE



Size  
**300x1200mm**

Surface  
**Matt**

Thickness  
**09mm**

**STEP** Collection

A stair riser is the near-vertical element in a set of stairs, forming the space between one step and the next. It is sometimes slightly inclined from the vertical so that its top is closer than its base to the person climbing the stairs.



**BULL NOSE  
MOULDING**



**SANDWICH**



**GROOVE WITH  
EPOXY FILLING**

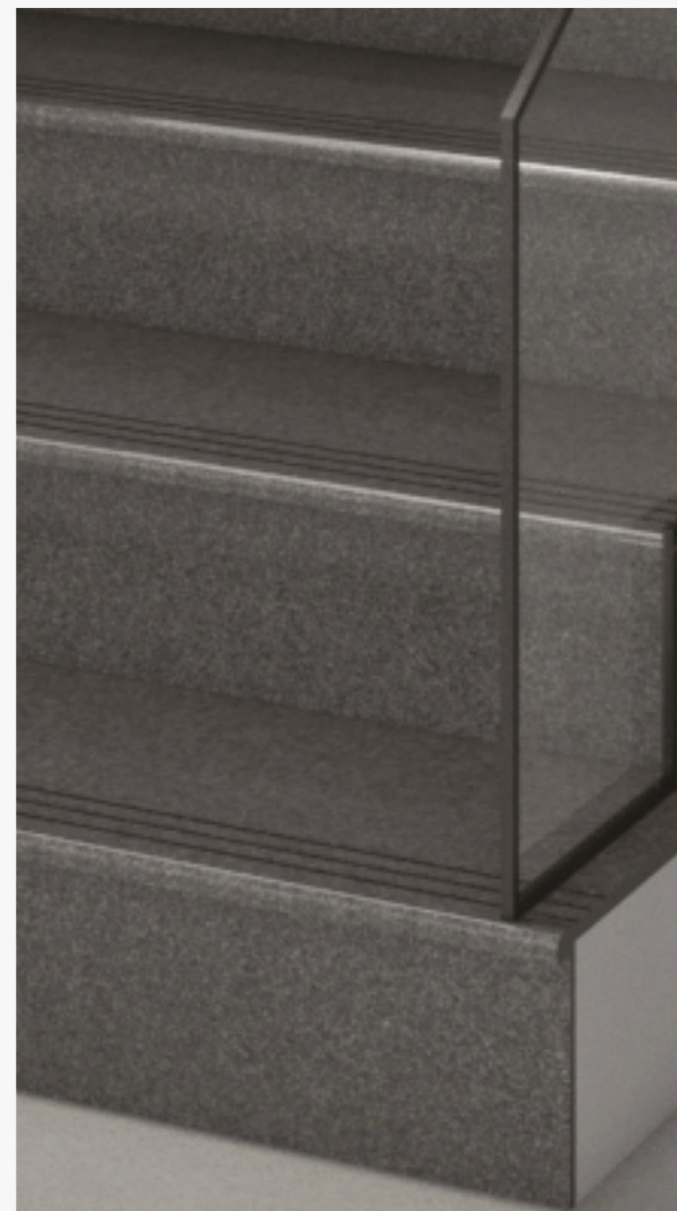
# G R A P H I T E

www.  
marfiltiles.net



GRAPHITE

300x1200mm



**STEP**  
Collection

**FULJ** BODY  
VITRIFIED TILES

**MARFIL**  
TILES

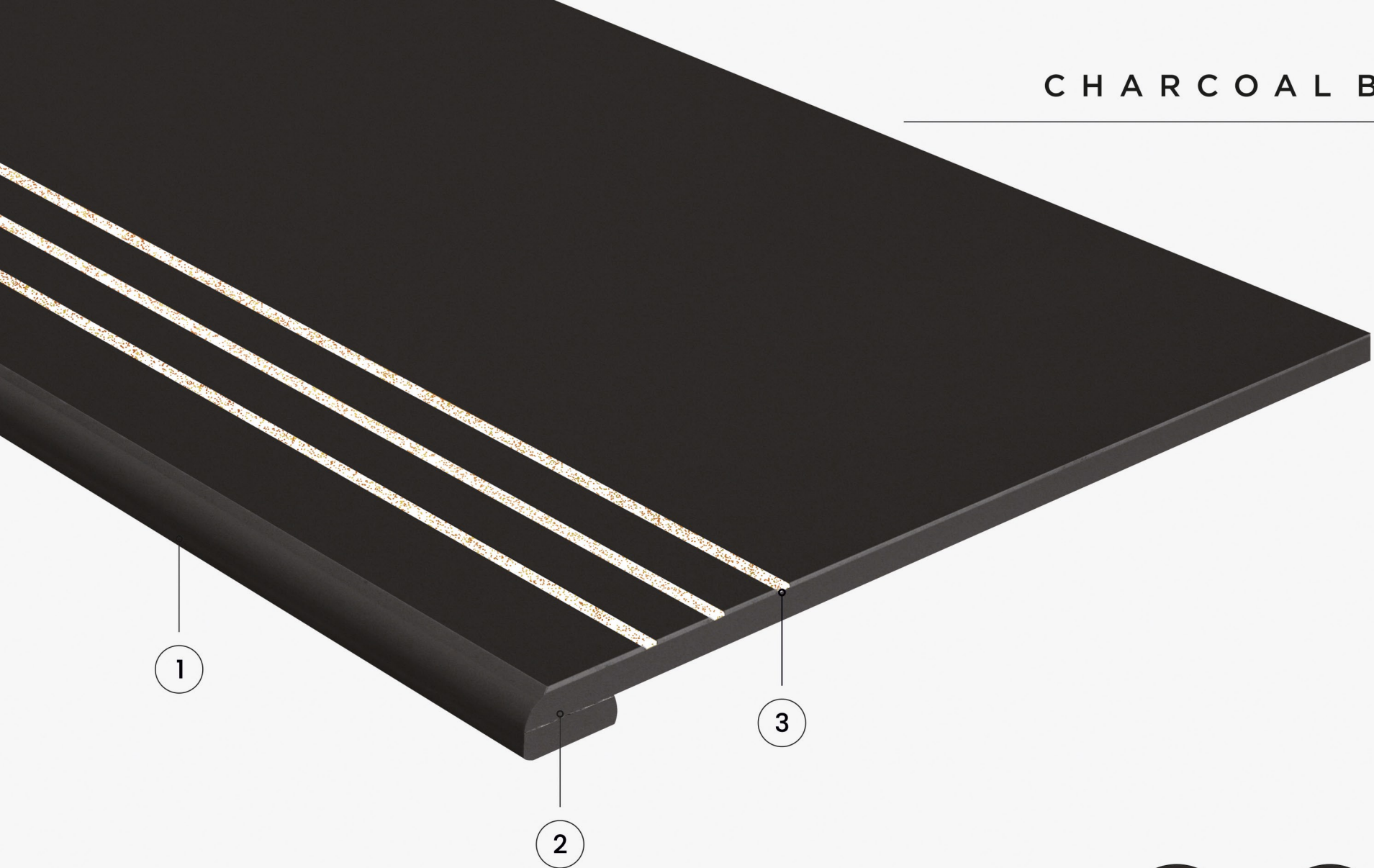


MARFIL  
TILES



G R A P H I T E

CHARCOAL BLACK



Size  
**300x1200mm**

Surface  
**Matt**

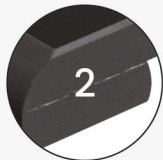
Thickness  
**09mm**



A stair riser is the near-vertical element in a set of stairs, forming the space between one step and the next. It is sometimes slightly inclined from the vertical so that its top is closer than its base to the person climbing the stairs.



**BULL NOSE  
MOULDING**



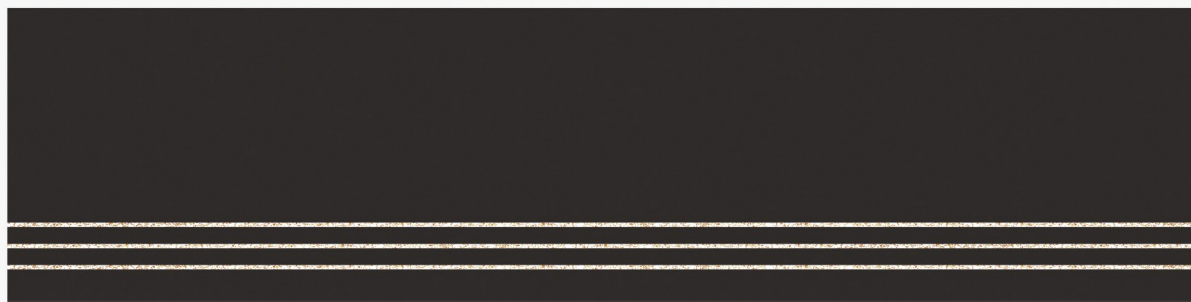
**SANDWICH**



**GROOVE WITH  
EPOXY FILLING**

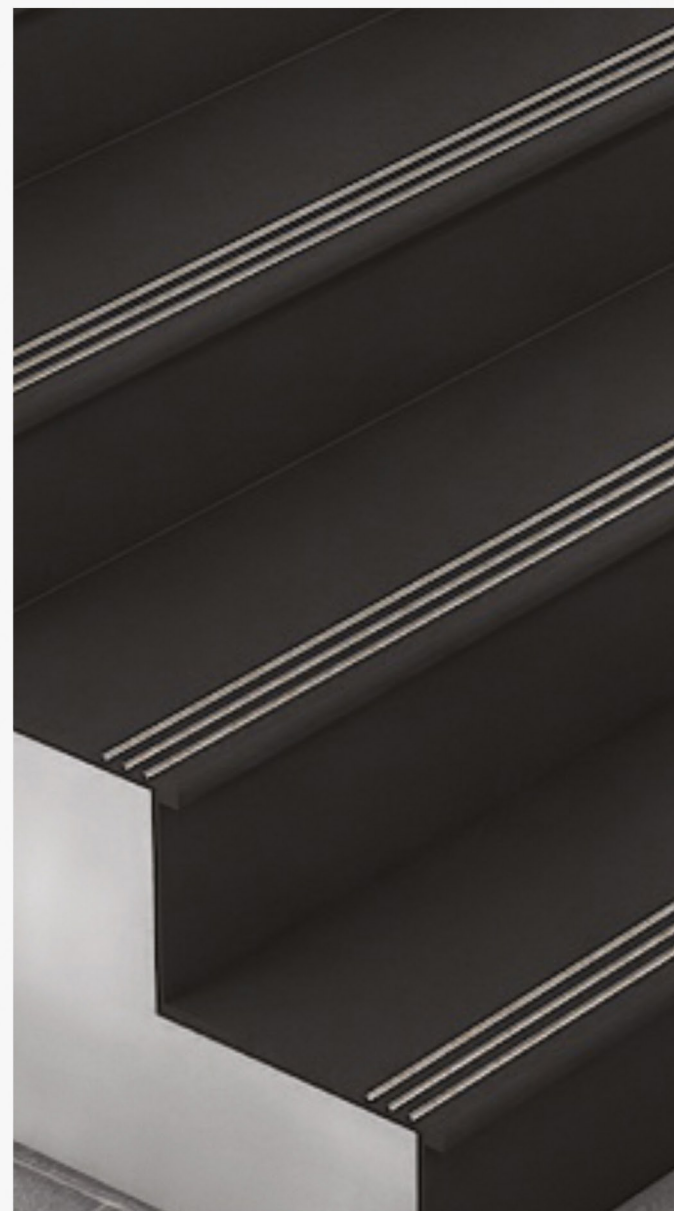
# C H A R C O A L B L A C K

www.  
marfilitiles.net



CHARCOAL BLACK

300x1200mm



MARFIL  
TILES

C H A R C O A L B L A C K



# B U T T E R



Size  
**300x1200mm**

Surface  
**Matt**

Thickness  
**09mm**

**STEP** Collection

A stair riser is the near-vertical element in a set of stairs, forming the space between one step and the next. It is sometimes slightly inclined from the vertical so that its top is closer than its base to the person climbing the stairs.



**BULL NOSE  
MOULDING**



**GROOVE  
FOR SAFETY**

# B U T T E R



BUTTER

300x1200mm



MARFIL  
TILES

B U T T E R



# B U R B O N



Size  
**300x1200mm**

Surface  
**Matt**

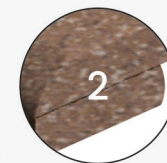
Thickness  
**09mm**

**STEP** Collection

A stair riser is the near-vertical element in a set of stairs, forming the space between one step and the next. It is sometimes slightly inclined from the vertical so that its top is closer than its base to the person climbing the stairs.



**BULL NOSE  
MOULDING**



**SANDWICH**



**GROOVE WITH  
EPOXY FILLING**



# BURBON



BURBON

300x1200mm



MARFIL  
TILES

B U R B O N



**MARFIL TILES LLP.**

Survey No. 171/172, Bh. Tekza Ceramic,  
Sartanpar Road, At. Ratavirda Village,  
Ta. Wankaner- 363 621, Dist. Morbi, Gujarat, INDIA.

Contact.

**+91 75740 55554**

Mail.

**info@marfiltiles.net**

Web.

**www.marfiltiles.net**